



greenCAPITAL
Realty Advisors

Commercial Real Estate
 and Construction Services

ACCURATE BUILDING OFFICE/RETAIL SPACE

1150 E. Atlantic Boulevard
 Pompano Beach, FL 33060

For more information
 please contact:

Steven A. Leeds

Licensed Real Estate Broker
 Certified Building Contractor

2799 NW 2nd Avenue
 Suite 213
 Boca Raton, FL 33431

📞 561.998.2427

📠 561.465.2034

✉️ steve@greencapitalrealty.com

🌐 greencapitalrealty.com

FOR LEASE



Available Space

- **Fully Leased**

Features

- Ample Parking
- Good Visibility
- Conveniently located off I-95
- Close to Federal Highway
- Short walk or drive to restaurants, banks, shopping, City Hall

Traffic Count

Atlantic & Federal Hwy. (USDOT) - 41,500 Cars per day

Demographics

<u>2017</u>	<u>1 mile</u>	<u>3 miles</u>	<u>5 miles</u>
Population:	14,493	122,333	322,875
Average Income:	\$73,332	\$73,731	\$70,735
Median Age:	42	44	44

www.greencapitalrealty.com

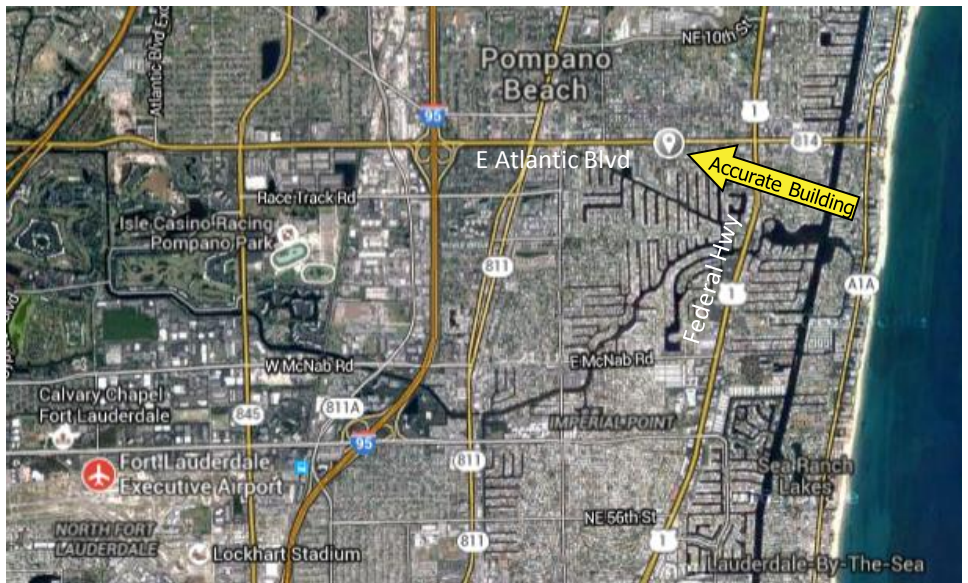
Subject to errors, omissions, prior withdrawal, lease or sale without notice



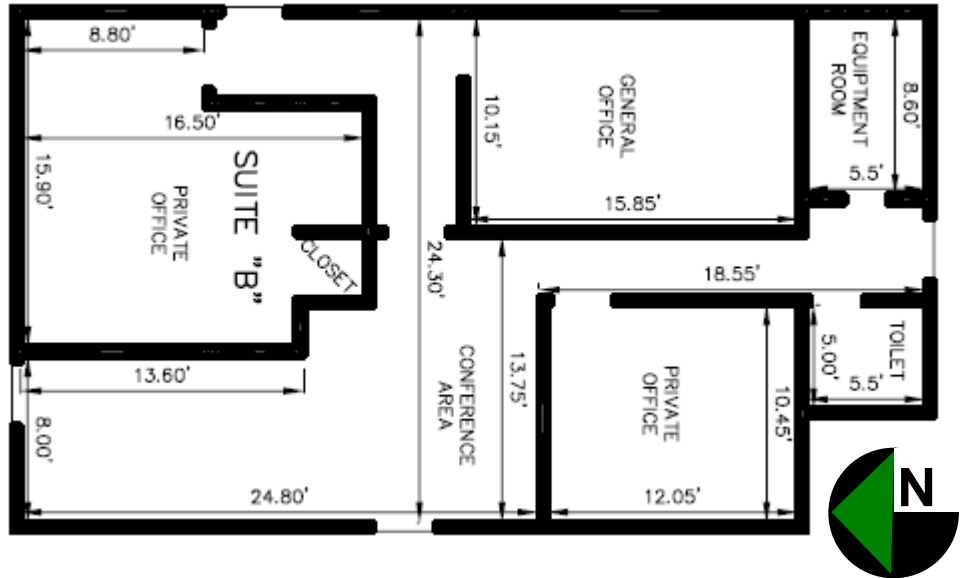
greencAPITAL
Realty Advisors

Commercial Real Estate
and Construction Services

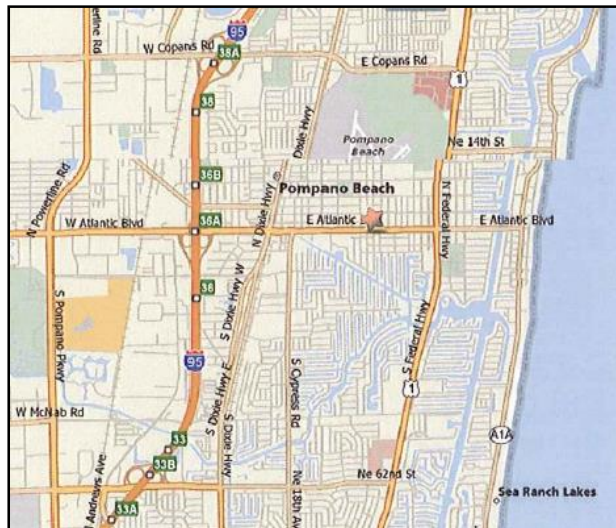
Aerial Map



Floor Plan



Map



www.greencapitalrealty.com

Subject to errors, omissions, prior withdrawal, lease or sale without notice