


# OFFICE BUILDING For LEASE

## 1308 E Atlantic Blvd, Pompano Beach 33060

### Available for Lease:

➤ 1308 East Atlantic Blvd 1,370 SF

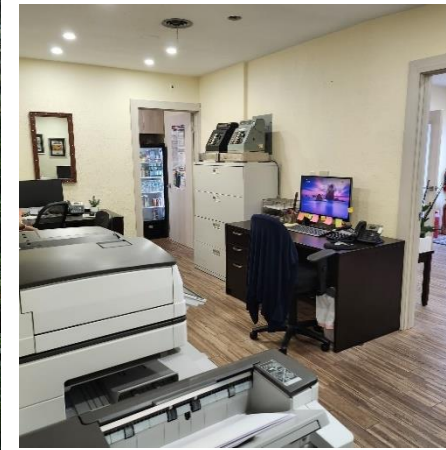
Parcel ID: 4942 01 05 0220

 Click the suite number for addl photos & surveys

### PROPERTY HIGHLIGHTS:

- Traffic Count: 34,399 ADT
- Easy Access to I-95 & US1
- Hurricane Impact Windows
- Transit Oriented (TO) Zone

### NEARBY BUSINESSES:



### DEMOGRAPHICS

[CLICK HERE FOR Zoning Info](#)

	2023	1 mile	3 miles	5 miles
Population:		14,607	106,919	248,818
Average Income:		\$84,024	\$87,101	\$87,064
Average Age:		43.5	45	44.8



Subject to errors, omissions, prior withdrawal, lease or sale without notice

## Steven A. Leeds



561.998.2427



[Steve@greencapitalrealty.com](mailto:Steve@greencapitalrealty.com)



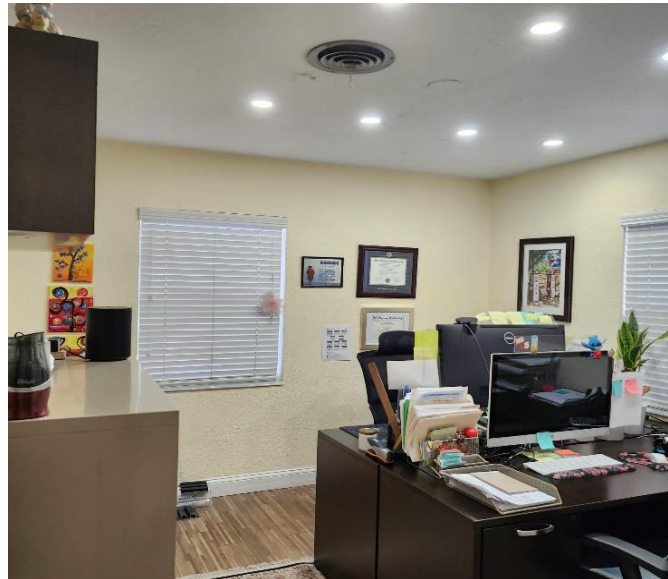
[Greencapitalrealty.com](http://Greencapitalrealty.com)

2799 Northwest Boca Raton Blvd. Suite 213, Boca Raton FL, 33431



# OFFICE BUILDING For LEASE

## 1308 E Atlantic Blvd, Pompano Beach 33060



Subject to errors, omissions, prior withdrawal, lease or sale without notice

**Steven A. Leeds**



561.998.2427



[Steve@greencapitalrealty.com](mailto:Steve@greencapitalrealty.com)



[Greencapitalrealty.com](http://Greencapitalrealty.com)

2799 Northwest Boca Raton Blvd. Suite 213, Boca Raton FL, 33431