

Museum Plaza Unit 501

200 S. Andrews Ave., Ft. Lauderdale, FL 33301

Class A Office Condo

PROPERTY HIGHLIGHTS

- Double glass door entry – right off the elevator
- Designer lobby
- Heli-pad usage
- Doorman Service
- Medical use permitted
- Fountain Plaza for special events
- 24-hour security & private keycard access
- Walk to shops and restaurants of Las Olas
- Minutes to County & Federal Courthouse
- Free valet parking & 3 indoor secure spaces
- City parking garage directly across the street



AVAILABLE FOR SALE

- Unit 501... 4,020 SF

**Offered for Sale at
\$1,349,000**

ALSO AVAILABLE FOR LEASE



Museum Plaza Unit 501

200 S. Andrews Ave., Ft. Lauderdale, FL 33301

DEMOGRAPHICS

2021	1 mile	3 miles	5 miles
Population:	26,321	136,082	293,366
Avg. Income:	\$116,395	\$96,312	\$86,362
Avg. Age:	40	41	41

YEAR BUILT

- 1986

BUILDING RATING

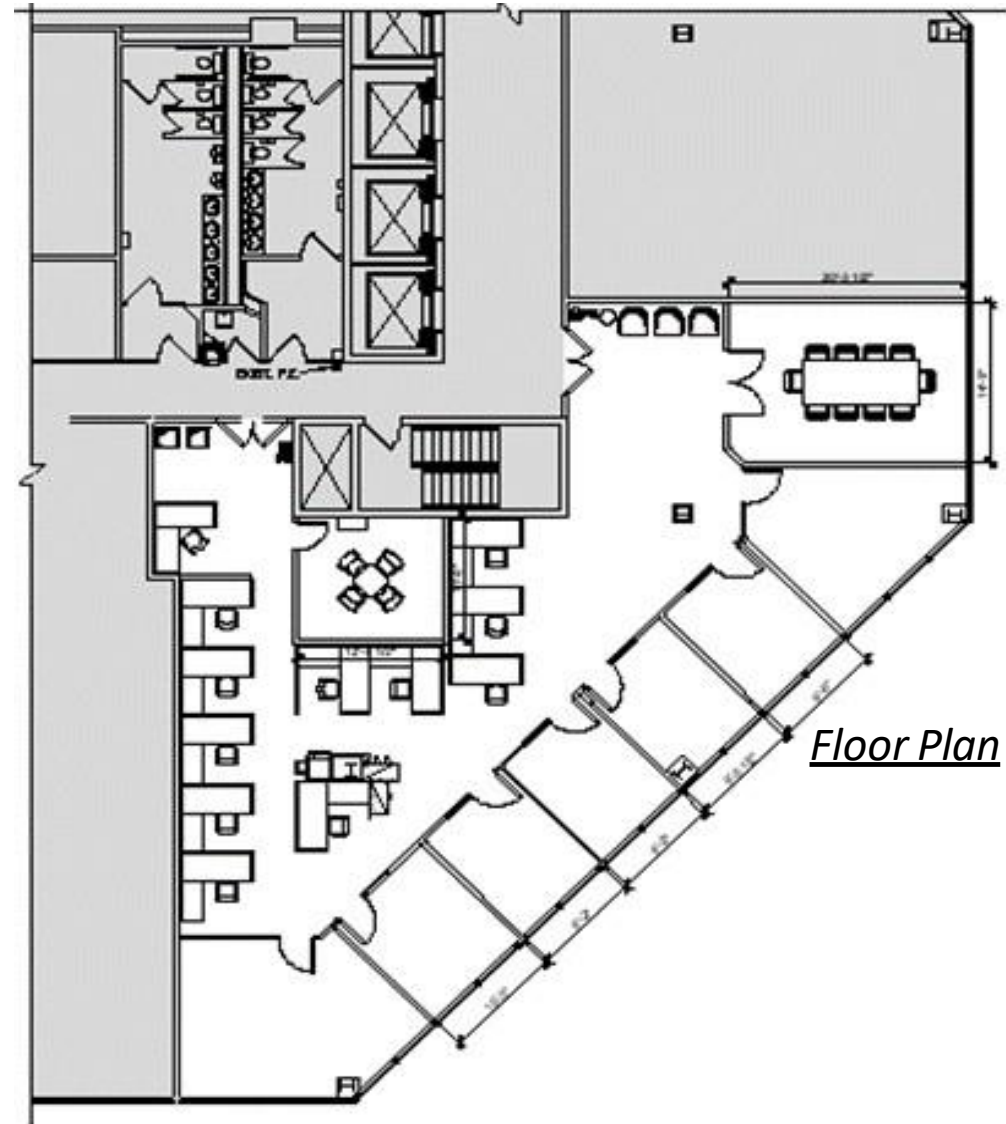
- 4 Star

BUILDING GLA

- 180,603 SF

ZONING

- RAC-CC City Center District is the city's high- intensity downtown zoning district.



Commercial Real Estate and Construction Services

Subject to errors, omissions, prior withdrawal, lease or sale without notice

Steven A. Leeds

📞 561.998.2427 |

✉ Steve@greencapitalrealty.com |

🌐 Greencapitalrealty.com

2799 Northwest Boca Raton Blvd. Suite 213, Boca Raton FL, 33431